



#### Quick connector short

for the firm connection of the outer platform elements, guarantees no height differences even on uneven ground

**Art. no.:** 19243

Suitable for all platforms



#### Quick connector long

The connector ensures a firm connection of the platform elements and prevents them from moving. It connects four platform frames and stabilizes the platforms.

**Art. no.:** 19244

Suitable for all platforms

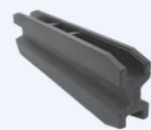


#### Socket wrench

for quick connectors, SW4

**Art. no.:** 29100

Suitable for all platforms



#### X-connector inside

with 2 bars, approx. 12 cm long, black

**Art. no.:** 19240

Suitable for all platforms



#### X-connector outside

without bar, approx. 12 cm long, gray

**Art. no.:** 19241

Suitable for all platforms

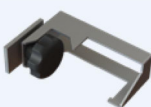


#### Hook wrench

for pulling out the X-connectors

**Art. no.:** 19250

Suitable for all platforms

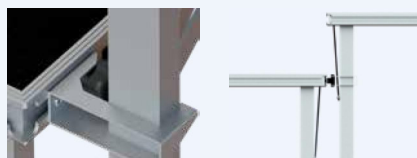


#### Connecting clamp

for folding legs for stepped installation (assembly of platforms at different heights)

**Art. no.:** 19040

Suitable for Optimus



#### External coupling

for the fixed connection of the platform elements, e.g. when the platform is positioned against a wall and there is little space for assembly.

**Art. no.:** 19102

Suitable for all platforms



#### Frame connector

for the firm connection of the platform elements; is attached to the underside of the aluminum frame of the two platforms to be connected.

**Art. no.:** 19009

Suitable for Praktikus & Dino



**Art. no.:** 19104

Suitable for Universal & Unistage



#### Iron clamp

for the firm connection of the stage elements; is attached to the underside of the aluminum frame of the two platforms to be connected (can be used especially on old platform systems).

**Art. no.:** 19101

Suitable for all platforms



#### Connecting strut short

Platform width 100 cm, steel parts powder-coated to RAL 9005 deep black

**Dimension** **Art. no.:**

45 x 45 mm 19010

60 x 60 mm 190101



#### Connecting strut long

Platform width 200 cm, steel parts powder-coated to RAL 9005 deep black

**Dimension** **Art. no.:**

45 x 45 mm 19011

60 x 60 mm 190111

Suitable for Praktikus platforms and stage heights between 100-160 cm

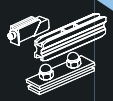


#### Coupling clamp

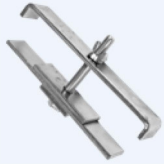
for stepped installation to connect a stage frame with the plug-in foot of the platform

**Art. no.:** 15001

Suitable for Ideal & Speedi



# CONNECTION STAGES + FEET + PANELS



## Connecting clamp (foot-foot connector)

for stepped and horizontal installation for square tube 45x45 mm, the plug-in feet of adjacent platforms are connected

**Art. no.:** 190004

Suitable for Ideal & Speedi



## Coupling angle

for stepped, height offset installation. The threaded slide of the bracket is inserted into the mounting groove of the lower platform and fastened. Then this coupling bracket is used to connect the side arm of the next higher scissor platform.

**Art. no.:** 19100

Suitable for Universal & Unistage



## Mounting

is used when a platform is placed on top of another platform. This prevents slipping of the feet.

**Art. no.:** 19103

Suitable for Universal

**Art. no.:** 191031

Suitable for Universal



## Aluminum cover plate

for tool-free mounting on the frame, to cover the stage profile, surface natural aluminum, 100 cm long

**Art. no.:** 18688

Suitable for all stages (except Optimus)



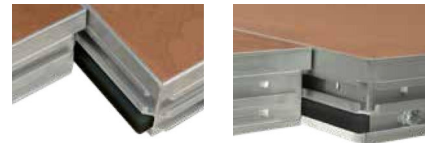
## Black plastic strip

approx. 33 cm long, interlocks both longitudinal profiles and prevents steps (tripping edges) in the platform surface under extreme loads

**Black Art. no.:** 19248 for Praktikus Light / Optimus

**White Art. no.:** 2563 for further platforms

Suitable for all platforms



## Bumper and baseboard

made of L-aluminum profile 50x20x3 mm, protruding 5 cm, galvanized steel parts, prevents chairs or other things from tipping over the stage

**99 cm long Art. no.:** 18530

**199 cm long Art. no.:** 18532

Suitable for all stages (except Optimus & Speedi)

**69 cm long Art. no.:** 18534

**139 cm long Art. no.:** 18535

Suitable for Optimus

**124 cm long Art. no.:** 4551

Suitable for Speedi



## Cover plate for stage element

made of beech multiplex board, 15 mm thick, natural lacquered (with 2K-PUR coating in B1), panel flat with element surface

**100 x 20 cm Art. no.:** 18550

**100 x 40 cm Art. no.:** 18551

**100 x 60 cm Art. no.:** 18552

**100 x 80 cm Art. no.:** 18553

**100 x 100 cm Art. no.:** 18554

**100 x 120 cm Art. no.:** 18555

**100 x 20 cm Art. no.:** 18556

**200 x 40 cm Art. no.:** 18557

**200 x 60 cm Art. no.:** 18558

**200 x 80 cm Art. no.:** 18559

**200 x 100 cm Art. no.:** 18560

**200 x 120 cm Art. no.:** 18561

Suitable for all platforms

Other versions e.g. made of screen printing board, decorative chip-board, stained and lacquered surfaces etc. available on request.

