

The logo for Mott, featuring the word 'mott' in a stylized, lowercase, blue font with a white outline and a drop shadow effect.

MOBILE STAGES & EVENTSOLUTIONS



MOBILE (INDOOR & OUTDOOR) DANCE FLOORS

The foundation of every good event

- simple & quick installation
- screwless connection
- proven & widely used in practice
- extensive range of accessories
- stability & durability



MOBILE DANCE FLOORS



Mobile dance floors at one sight

Area (W x D)	95x95 cm
Weight	15-20 kg (depending on covering)
Usable area	approx. 1 m ²
Stacking height	approx. 2.6 cm

Easy to install

The right dance floor is essential for a successful event. With Mott's mobile dance floors, you can create the perfect atmosphere for any occasion—whether it's a wedding, birthday, corporate event, or a professional dance competition. Mott offers a compact and easy-to-connect system for individual dance floor elements, allowing you to customize the size to fit your needs.

Each profile frame features drilled holes and alignment pins, allowing for easy leveling of uneven surfaces. Additionally, we have attached special felt strips underneath each dance floor element to protect your flooring while also enhancing grip and stability.

Mobile dance floors indoor

Dance floor "Parquet" natural oak
Size per element: 95 x 95 cm

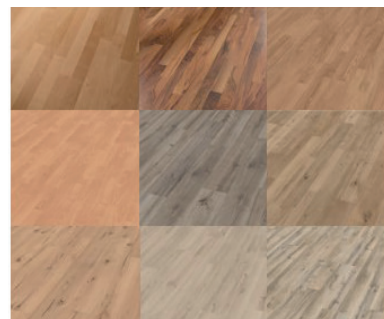
- parquet surface protected by a surrounding lightweight metal profile frame with edge protection
- special locking system ensures a secure connection between dance floor elements

Dance floor made of solid core panel, surface: Graphite black
Size per element: 95 x 95 cm

- Surface and Edge protection provided by an all-around lightweight metal profile frame
- The special locking system ensures a secure connection between the dance floor panels
- Other surface colors available upon request

Dance floor with laminate from the LC 55 collection by Meister

- pressure-resistant against high heels and resistant to cigarette embers
- laminate surface protected by a surrounding lightweight metal profile frame with edge protection
- special locking system ensures a secure connection between dance floor elements



Scan the QR code and access the Meister Collection LC 55.



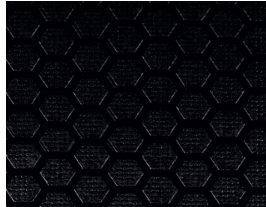
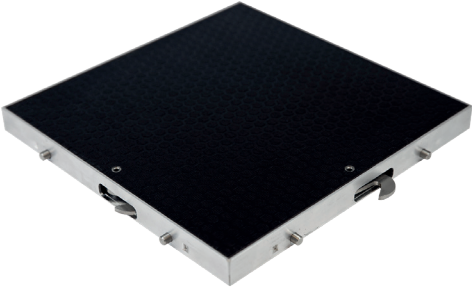
All surfaces shown may have slight visual deviations.



MOBILE STAGES & EVENTSOLUTIONS

LET'S DANCE

Mobile dance floors outdoor



Dance floor "Outdoor"

Application area: Outdoor

Size per element: 95 x 95 cm

- dark brown color
- slip-resistant with a textured hexagonal pattern
- surface made of plywood board protected by a surrounding lightweight metal profile frame
- integrated alignment pins allow for easy leveling on uneven surfaces

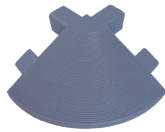
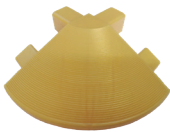
Edge profile

Versions: Indoor or Outdoor

Size: approx. 95 x 10 cm

Color: Gold or aluminum

(other colors available upon request)



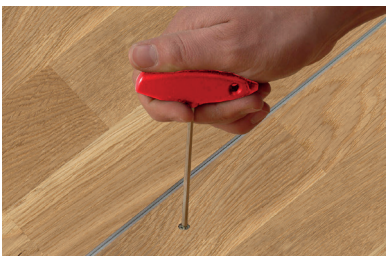
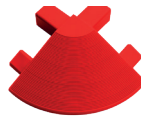
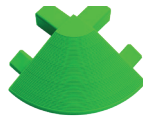
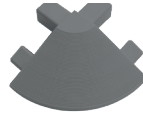
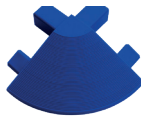
Connecting corner for edge profile

Dimensions: approx. 10 x 10 cm

Color: Gold or aluminum

(other colors available on request)

Selection of possible custom colors



Socket wrench

- for connecting dance floor elements and edge profiles

Space-saving and organized storage

Transport Trolley "CargoBox Dance Floore"

Suitable for dance floors and edge profiles



- for dance floors and edge profiles, to accommodate 25 dance floors
- Equipped with 2 fixed and 2 swivel casters (without brakes)
- Steel parts powder-coated in RAL 9005 deep black
- Delivered as a kit (not pre-assembled)
- Other versions (dimensions & colors) available upon request

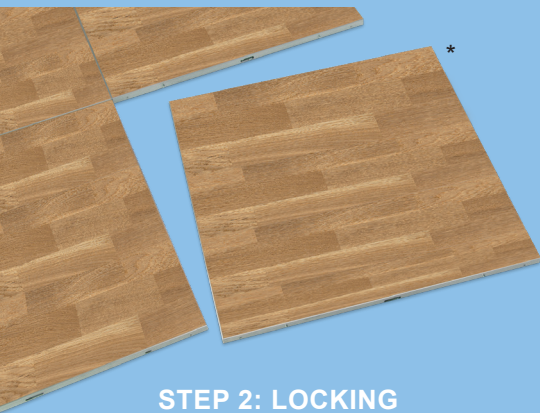


MOBILE STAGES & EVENTSOLUTIONS

MOBILE DANCE FLOORS

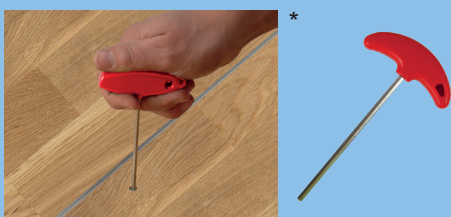
3 steps to the finished dance floor

STEP 1: INSTALLATION



- Place the elements (approx. 15-20 kg depending on the dance floor surface) in your space.
- A lightweight metal profile frame with pressed corner brackets ensures extreme stability, high load capacity, and full edge protection of the elements.
- Each profile frame features drilled holes and alignment pins, allowing for easy leveling of slightly uneven surfaces.
- Special felt strips are attached underneath each dance floor element to protect your flooring while also optimizing grip and stability.

STEP 2: LOCKING

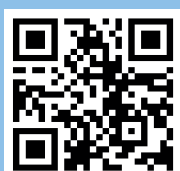


- The elements are locked together using a socket wrench.
- This is done effortlessly and quickly – only half a turn is needed to securely connect the dance floor elements

STEP 3: ATTACHING THE EDGE PROFILE



- Finally, the appropriate lightweight metal edge profile (e.g., gold anodized) is attached to the outer edges.
- This is just as easy as connecting the individual elements.
- The beveled profile is visually appealing, slip-resistant due to its textured surface and contributes to the safety of your guests



CONTACT

www.mott.de
Phone: +49 9341 9256-0
Email: info@mott.de

ADDRESS & SHOWROOM

Mott Mobile Systeme GmbH & Co. KG
Am Dittwarer Bahnhof 9-11
97941 Tauberbischofsheim